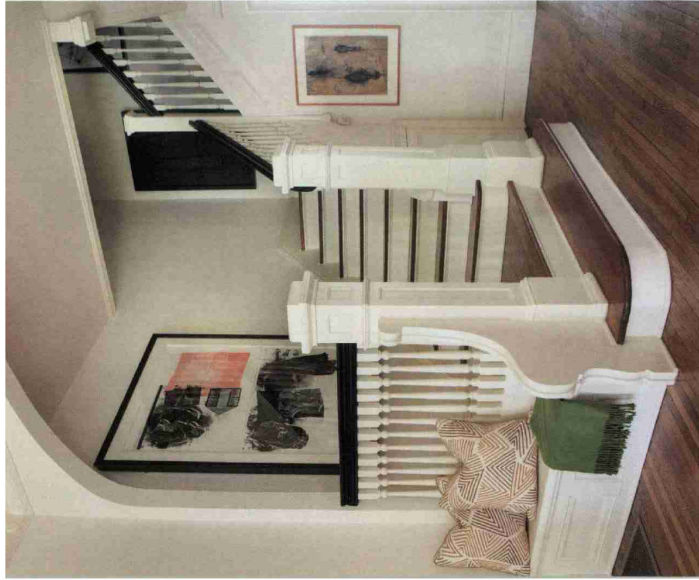


RENOVATION OF THE MONTH

Mindful Makeover

A century-old Ansley Park abode receives a masterful addition thanks to the keen vision of decorator Alice Cramer, architect Caroline Reu Rolader and landscape designer Carson McElheney.

WRITTEN BY *Jeanne Lyons Davis* PHOTOGRAPHED BY *Erica George Dines*



The kitchen is sleek and efficient, homing in on black elements, such as dark marble countertops, black stone floors and a Calhoun Design & Metalworks hood.

resources

INTERIOR DESIGN Alice Cramer, Alice Cramer Interiors
ARCHITECT Caroline Reu Rolader, Rolader Architects
LANDSCAPE ARCHITECT Carson McElheney, Carson McElheney
CONTRACTOR J. McElheney Landscape Architecture & Design
BUILDER Tim Powers, Powerhouse Construction
SECTIONAL SOFA Roche Bobois
WOODEN COFFEE TABLE South of Market
RUG Moattar Ltd. **PIL-LAWS** Jim Thompson
RANGE HOOD Calhoun Design & Metalworks
CHAIRS West Elm
PENDANT LIGHT Arteriors
KITCHEN TABLE AND CHAIRS Delphi
Dining Chair by **Arteriors** from **Arteriors**
LANTERN **CURTAINS** Holland & Sherry
QUASHAK RUG Nomatic
RUGS UP HOLSTERED CHAIRS Parc Monceau
CHAIR FABRICS Grey Watkins and Payne
CANOPY BED American Iron-ware
BEDROOM ARTWORK Joseph Guay
BEDSIDE TABLES Parc Monceau
LAMPS Edgar-Reeves
STAIRCASE ARTWORK Robert Rauschenberg

